



JUST YOUR MEETING

Some meetings simply require more focus and fewer distractions. When you hold your meeting at Seal Cove Inn, the entire ten-room hotel is yours. Without other hotel guests at the inn, your team can interact, meet, socialize and engage in team-building activities in a private, secure, distraction-free environment.



OVERVIEW

Seal Cove Inn is a serene, newly updated ten-room coastal retreat just 30 minutes from San Francisco. We're uniquely situated on a bluff above the Pacific Ocean, sheltered by a towering grove of cypress trees. Here you'll find a place to focus on your work in a secluded environment while staying completely connected via high-speed Wi-Fi.

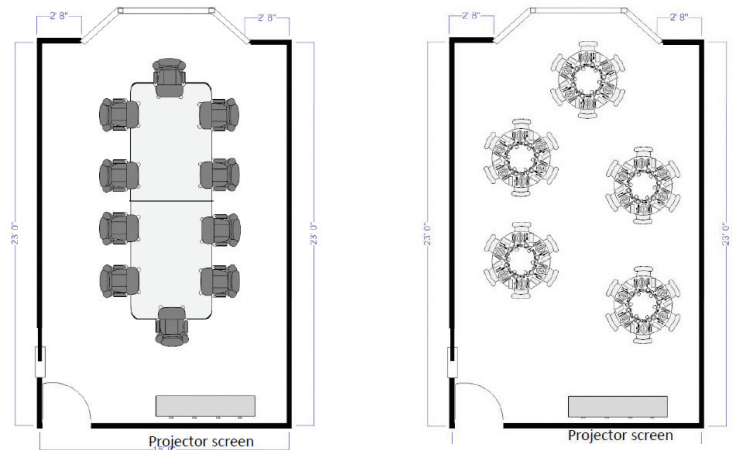
Our ten guest rooms each feature a California king bed, warming gas fireplace, private bath with towel warmer and a balcony or terrace opening to the garden and ocean beyond. The inn has three spacious room types. Some have upgraded bathrooms including a Jacuzzi tub and walk-in shower. A European-style breakfast prepared by our classically trained chefs and a complimentary glass of wine in the evening are included in the nightly group rate.

Group rates begin at \$4,945 a night plus tax.

CONFERENCE FACILITIES

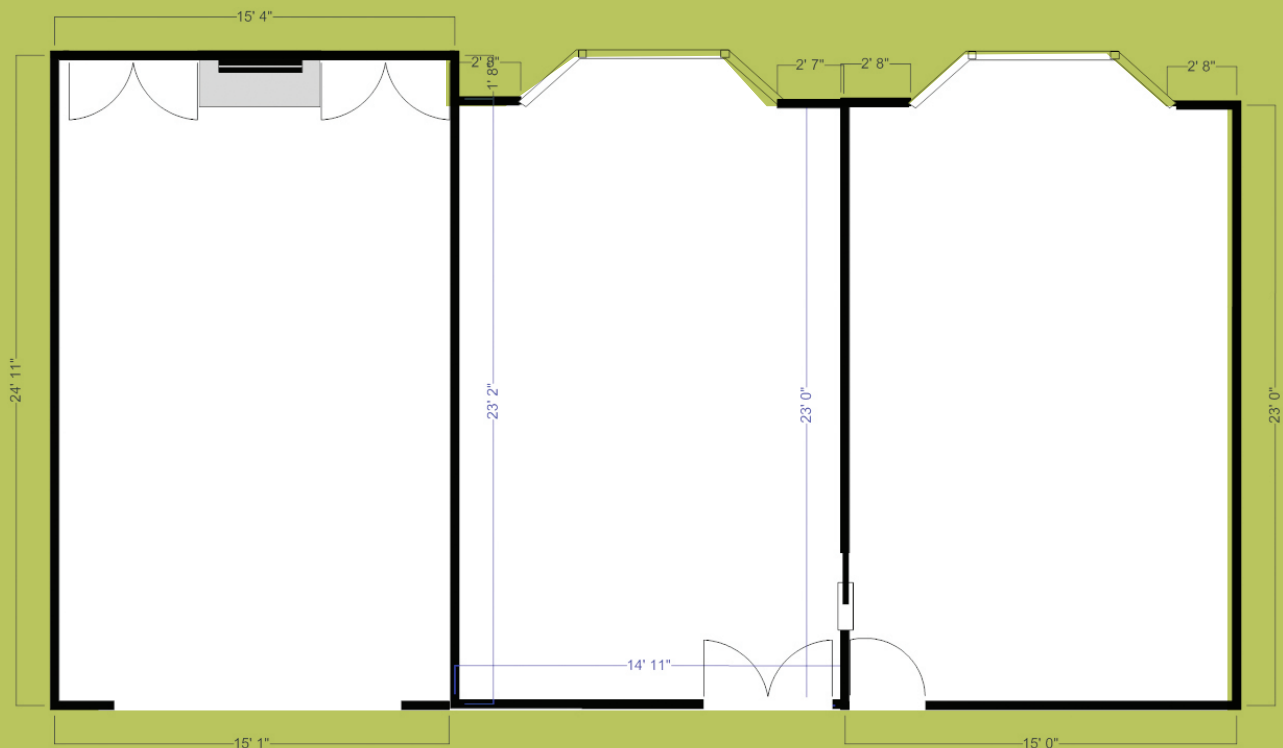


Our designated conference room can be set up boardroom-style with a large conference table, video/projector screen, projector, conference speakerphone, and complimentary Wi-Fi. The table seats 10 participants comfortably and additional chairs may be added for larger presentations.



ROOM DIMENSIONS

For your reference, the dimensions and layout of the first floor are presented below as well as two suggested configurations for the conference room: boardroom-style and event-style with round tables (extra charges apply for rental of round tables).





DINING

Our signature Be Replenished Breakfast is always included for each meeting attendee. A full catering menu is available for additional breakfast, lunch or dinner options in various price ranges with advance reservations.

HALF MOON BAY

Half Moon Bay, located approximately 35 minutes south of San Francisco along the Pacific Ocean, is a stunning slice of the Golden State that boasts an unrivaled combination of coastal town friendliness, charm and natural beauty.

Our temperate climate makes it a comfortable place to visit year round with average temperatures ranging between 40° F (5° C) and 75° F (24° C).

There is simply no bad time to hold a meeting here. Half Moon Bay also boasts a variety of dining options. Find fine dining at Navio or exceptional Italian cuisine at It's Italia, Pasta Moon or Mezzaluna. Fresh-off-the-boat seafood can be found at any number of eateries in the harbor area. The staff at Seal Cove Inn will be happy to assist you with planning the best dining venue for your particular group.





ACTIVITIES

The team-building options are endless when planning a meeting or event at the Seal Cove Inn. These are just a sampling of the many options for your visit to our area – we look forward to discussing your plans in more detail to tailor an event perfect for your group.

BEACHES

Fitzgerald Marine Reserve

The most popular activity for inn guests is exploring the Fitzgerald Marine Reserve and beach that borders the inn. This San Mateo County park is a draw for many residents and visitors alike. Here you can explore tide pools, beautiful walking trails and observe the harbor seals in their protected environment (yes, there are seals at Seal Cove Inn)! For a formal tour, reservations are required for groups of 10 or more – all will benefit from the knowledge shared by one of the docents who staff the reserve.

fitzgeraldreserve.org

Half Moon Bay State Beach

This four-mile stretch of beach kisses the Pacific at the western end of Kelly Street. The waters bring strong currents in from the north and swimming is not advised. We suggest instead that you enjoy the smooth sands for a morning jog or stroll in the same during the evening before heading back in to town for a coastal farm-to-table dinner.

Surfer's Beach

At this roadside favorite for the surfer-savvy and sand-locked alike, parking is a lot like true love - if you find it, move fast and don't let go! This jetty-side strip of sand will be deep underwater during a high tide, but when the old salt is a little further out to sea, it is polka-dotted with footprints. Bring some snacks and sit back to watch the surfers, skim boarders, and paddle boarders at play or rent your own and join in the fun! Our As You Wish concierge service can help with rentals.

Montara State Beach

Enclosed between dramatic cliffs, this two-mile beach features a cave-like area filled with come-and-go tide pools. Swimming is not recommended but feel free to sun yourself, play kickball and stroll to your heart's content.

Gray Whale Cove State Beach

Named for the gray whales that have been known to make an appearance here, this 800-foot beach is situated off the rocky cliffs just before you reach Montara (driving north from the inn). Access is via a trail leading from the parking lot. Keep an eye out for poison oak if you stop to smell the flowers on your way down - wild blue Douglas iris, golden-yellow buttercups, and bright pink hollyhocks are all abundant in the spring!

Poplar Beach

At the far end of Poplar Street (just south of Kelly Avenue), you'll find a long, sandy beach hidden away with plentiful parking. This destination is a favorite of dog owners and perfect for a game of catch or a run in the sand!

Pescadero State Beach

With an entire mile of shoreline, this popular destination boasts sandy coves, rocky cliffs, tide pools, fishing spots and picnic facilities. Just across the highway is Pescadero Marsh Natural Preserve, a popular spot for bird watchers and other naturalists. The Reserve is a refuge for blue heron, kites, deer, raccoons, foxes and skunks.

OUTDOOR ADVENTURES

Hiking

There is an abundance of scenic hiking at nearby state and county parks. Be sure to talk to our innkeepers for recommendations and further information.

A small sampling of hiking options include:

- Purisima Creek Redwoods
- San Pedro Valley County Park, Pacifica
- Montara Mountain, McNee Ranch State Park

Bicycling

There are miles of wonderful recreational trails throughout the area. The inn has two bicycles available for use on a complimentary basis or a local bike rental operation can be contracted to provide bikes for your entire group. (Rates vary depending on the type of bike, and there is a \$20 delivery fee).

Ocean Kayaking

Discover the world of sea kayaking by paddling among seals, birds, and other marine life in protected Pillar Point Harbor or the wild waters of the open Pacific near Half Moon Bay.

hmbkayak.com

Surfing

Sign up for surf or paddleboard lessons with the legendary local Jeff Clark, rumored to be one of the world's best big-wave riders. Surf boards, paddleboard and wetsuit rentals are also available.

jeffclarkmavericks.com

Horseback Riding

The Sea Horse Ranch has numerous guided trail ride options as well as the option for a group barbeque.

seahorseranch.org

Whale Watching

From December through May, gray whales can be observed a few miles off California's shore, and whale watchers aboard Oceanic Society's naturalist-led whale watch boats have a unique vantage from which to view this incredible "parade." Group rates start at \$40 per person and include talks by naturalists on gray whales and the conservation efforts which brought them back from near extinction. The cruises last approximately 3 hours and operate rain or shine.

oceanicsociety.org/whales-halfmoonbay

Golf

There are numerous world-class golf courses within ten minutes to an hour's drive and we would be happy to make arrangements for golf outings.

Shopping

Wandering through downtown Half Moon Bay's many charming shops and boutiques is an enjoyable way to spend the day. You're sure to find treasures you won't see anywhere else.

CONTACT US TODAY

PLEASE CALL US AT **650.728.4114**
TO DISCUSS HOW WE CAN CREATE
THE PERFECT MEETING FOR YOU.

